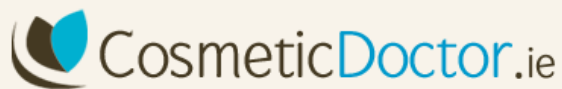


# Price List



Save an average of 30% if you pay for a session of 6 or 8 in advance

Combination Packages for even greater savings!

## WOMENS PRICE LIST

Consultation & Patch Test	50*	
	Per session	8 sessions
Upper Lip	60	225
Chin	65	280
Cheeks	60	330
Sides of Face	80	440
Full face (1-4 above)	110	600
Neck front	80	440
Hairline	80	440
Between eyes	60	330
Any 2 areas on face	100	500
	Per session	6 sessions
Underarms	90	350
Bikini	100	400
Extensive Bikini	150	600
Full Bikini	200	800
Buttocks	90	350
Hands or feet	90	350
Fingers or toes	60	250
Lower arms	150	600
Full arms	200	800
Nipples	70	290
Chest	80	330
Lower abdomen	100	400
Naval line	70	290
Lower back	120	500
Half thighs	180	750
Upper legs	275	1000
Lower legs	225	980
Full legs	325	1200

## WOMENS PACKAGES

Consultation & Patch Test	50*	
	Per session	6 sessions
Lower Legs, Bikini & Underarms	350	1380
Lower Legs, Ext Bikini & Underarms	400	1560
Lower Legs, Full Bikini & Underarms	455	1730
Full legs, Bikini & Underarms	440	1640
Full legs, Ext Bikini & Underarms	490	1800
Full legs, Full Bikini & Underarms	530	1950
Bikini & Underarms	160	600
Extensive Bikini & Underarms	200	800
Full Bikini & Underarms	240	900
Lower Legs & Underarms	250	1000
Lower Legs & Bikini	280	1100
Lower Legs & Extensive Bikini	330	1200
Lower Legs & Full Bikini	380	1350
Full Legs & Underarms	350	1300
Full Legs & Bikini	360	1340
Full Legs & Extensive Bikini	400	1500
Full Legs & Full Bikini	450	1680

\* Redeemable from cost of 1st treatment

[www.cosmeticdoctor.ie](http://www.cosmeticdoctor.ie)

Old Dublin Road, Stillorgan, Co Dublin, 01 2000 500

## Laser Hair Removal



Tel: 01 2000 500  
[www.cosmeticdoctor.ie](http://www.cosmeticdoctor.ie)

## Permanent Hair Removal

Forget about Waxing and Shaving FOREVER! During the treatment laser light is attracted to the pigment (melanin) in your hair. This heats the hair follicle to a degree that it results in permanent damage to the hair follicle.

The 'gold standard' for laser hair removal is a Long Pulsed Alexandrite laser. For darker skin types, the Nd: YAG is the laser of choice. These lasers are higher powered medical lasers.

The difference between these medical lasers and Intense Pulsed Light (IPL) for the treatment of unwanted hairs is that this is not the gold standard. (IPL is better suited to treatment of pigmentation and evening out skintone.)

### What is different about laser treatments at Slievemore Clinic?

Here at Slievemore Clinic all laser treatments are provided by a medical doctor rather than a therapist. The practitioner has obtained the BTEC Laser qualification for treatment of unwanted hair, veins, pigmentation and facial rejuvenation.

### What happens during your treatment?

Laser light is attracted to pigment melanin present in hair. The targeted hair follicle is heated to a degree that results in permanent damage to hair follicle.

### What areas can be treated?

Laser can treat any hair bearing areas such as legs, face, underarms, bikini etc.

### How many treatments are recommended

Usually between six to eight treatment sessions are required. Results may be seen sooner but a full session is recommended for permanent results.

### What should I expect after each treatment?

Your skin may experience slight heat and redness. This is perfectly normal. Also there may be slight swelling bumps around hair follicle. Rarer side-effects include hyperpigmentation or hypopigmentation. Delayed shedding is also possible where your hair can take 2 weeks to fall out and during that time can appear to look as if it is growing. This is temporary and the hair will fall out after approximately 2 weeks.

### Prior to your treatment

- Avoid sun exposure for 4 weeks before your treatment. This is vital otherwise you run the risk of burning with laser treatments as the melanin in your skin is overstimulated.
- Avoid applying fake tan for 1 week prior to your treatment. This includes tinted moisturisers such as Nivea and Johnsons, L'Oreal Sun Shimmer etc.
- Do not pluck or wax area to be treated prior to your treatments. The principle behind hair removal is that you need to have hair present in the hair follicle to work.
- Shaving area prior to treatment is recommended in order to maximise effects from your treatment.

Tel: 01 2000 500

[www.cosmeticdoctor.ie](http://www.cosmeticdoctor.ie)

Old Dublin Road, Stillorgan, Co Dublin, 01 2000 500

Save an average of 30% if you

## MENS PRICE LIST

Consultation & Patch Test	50*	
	Per session	8 sessions
Beard	160	890
Cheeks / Sides of face	100	560
Scalp	300	1680
Neck Front	160	890
Back of neck	120	670
Between the eyes	60	330
Nose surface	60	330
Ear hair	60	330
Nasal hair	60	330
	Per session	6 sessions
Hands or feet	80	330
Underarms	90	370
Shoulders	250	1050
Upper back	250	1050
Lower back	250	1050
Full back	300	1260
Upper chest	250	1050
Stomach	150	630
Upper chest & stomach	270	1130
Naval to pubic line	100	420
Nipples	70	290
Full front	300	1260
Upper arms	150	630
Lower arms	170	710
Whole arms	300	1260
Lower legs	280	1170
Full legs	350	1470

\* Redeemable from charge of 1st treatment